

www.theclubhouse.org

The Clubhouse

For Special Needs, Inc.

For the mild to moderate mentally/ physically challenged teenagers and young adults.

AUGUST 2010 Newsletter

From the Director's Desk

Impatiently Waiting!

We are not at our ideal facility just yet. The past years to current day we have had our share of day to day building challenges i.e. plumbing, roofing, air-conditioning/heating and of course, lack of space.

I am grateful that we have a facility for our special young people even though it is not our ideal. We have done the best we can with what we have to work with.

Several people like the slogan "1000 giving \$1000" and mentioned they were going to "do it." That's exciting! There are 5 months till the end of this year. How exciting it would be to reach \$1 million by then. You realize that it would only take 1000 people/organizations. I am confident there are 1000 people out there somewhere waiting to hear about us and to donate to this well-deserving age group. Share with your friends!!!!

KNOCK OUT THE WALLS

While we wait for the "vision" to happen, we have been given permission by our landlord and our Board of Directors to knock out some walls here to give us a since of more space. The hallway is totally wasted space and not necessary. After the removal of the hall walls the front area will be open from the back kitchen wall to the back wall of the computer room and to the outer wall of our "gym" room.

Hopefully this remodeling will be done over a weekend sometime in August. Let's be aware that this remodeling will not totally solve our current space problem. So moving is still necessary.

Overlaid signature

Totally Forgotten

Our special needs teens DESERVE better. The Clubhouse is the **ONLY** after school program in all of NE Tarrant County.

1000 giving \$1000

HELP US BUILD A NEW FACILITY WITH A FULL GYMNASIUM!!!

Summer Time Fun at the Beach

ANNUAL SUMMER CLOSING PROGRAM

BANQUET & SPECIAL PUPPET PROGRAM

Saturday, AUGUST 21, 2010

6:30 pm – 9:00 pm

Church at the Cross

3000 William D. Tate Ave.

Grapevine, TX 76051

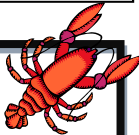
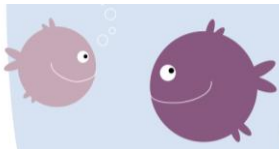
[See our website for directions]

\$10/Individual • \$20/Family

Suggested donation! Pay at the door!

Ticket automatically places your name in a drawing.

RSVP 817-285-0885



After-School & Day Programs

Begin August 23rd. Visit our website for more info.

The Clubhouse for Special Needs, Inc. ♦ 800 Brown Trail, Ste. C ♦ Bedford, Texas 76022 ♦ 817-285-0885

"... exceedingly, abundantly above all we ask or think."

The Clubhouse admits anyone regardless of race, color, and national or ethnic origin. A MHMRTC Contracted Provider

Photos of the Month

Summer Fun!



1000 Giving \$1000

1000 Giving \$1000

1000 Giving \$1000

DOES YOUR YOUNG PERSON NEED:

SPEECH THERAPY

OCCUPATIONAL THERAPY

PHYSICAL THERAPY?

These therapies are now available at The Clubhouse for Special Needs.

Grapevine Grains

From the mill, to the oven to your doorstep



Work project

Grapevine Grains has giving us a work project – flattening oats which will be roasted and used for their Granolas.

Grapevine Grains specializes in freshly milled wheat, and hand rolled oats. They believe in bringing you the freshest [Granolas](#), muffins, breads, and cookies. From the mill to the oven to your doorstep! Checkout their website: www.grapevinegrains.com.

Chili update

A big thank you for those who participated in the Chili event.

\$125 was received from that day and that was enough to pay our phone bill.

Again, Thank You!

Kroger Cashier: 1. Scan customer's KrogerPlus Card 2. Scan the attached Organization's barcode.

The customer's KrogerPlus Card is now enrolled in the Kroger Neighbor to Neighbor Donation Program & contributing funds to their organization. When you scan the barcode, the description on the receipt will say "Loyalty Div 0.00". This means the barcode was properly scanned. The following Friday, the customer's receipt will display a message at the bottom of the receipt saying "Your card is contributing to Neighbor to Neighbor #12345"

RE-SCAN the barcode for a NEW YEAR. Kroger donates money to The Clubhouse. Thanks for participating.

THE CLUBHOUSE FOR SPECIAL NEEDS



SOCIALIZATION, Not VEGETATION!