

www.theclubhouse.org

# The Clubhouse

For Special Needs, Inc.

For the mild to moderate mentally/ physically challenged teenagers and young adults.

MAY 2010 Newsletter

## From the Director's Desk

### REFLECTIONS

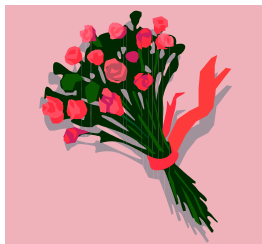
The Clubhouse for Special Needs is four years old [Jan 2010] but this summer will mark our **fifth summer** program. Our first summer was 2006 - we had 4 young people to start everything off. 2007 we had 8. 2008 we had 22. And 2009 we had 25. Note the jump from 8 to 22.

Our building only holds 15 kids plus staff and if we do anymore "jumping" we will have to turn young people away because of space limitations. We don't want to ever do that.

Those that know me personally, know I have a great desire for a larger facility and a facility with a full gymnasium. It's a struggle just to have money for our monthly budget let alone extra money to expand. I figure that once the word gets out that there may be a possibility that we would have to turn kids away in the summer 2010 - then perhaps people will give. I do not know why that statement is so true but sometimes "crisis" causes people to give more readily. Why is that?

*Continued on next page under "Giving is very important."*

# MAY

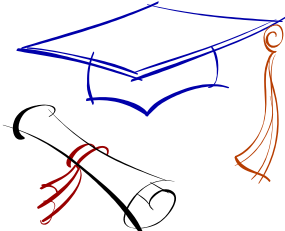


**MOTHER'S DAY** is special. Give your mom flowers, take her to dinner, and don't forget to give her a big hug and kiss. Oh - chocolates are good too!



**MEMORIAL DAY.** Don't forget to remember those who have fought for **FREEDOM** in the past, present and future. Give a serviceman/servicewomen a hug today and say, thank you!!!

Pray for PEACE!



**GRADUATION.** REMEMBER our **SPECIAL ED** students that are graduating especially those that are currently at The Clubhouse for Special Needs:

**Jonathan, Natalie, Blake**

## Summer is coming fast!

**June 1<sup>st</sup> - August 20<sup>th</sup> 8:00 am - 6:30 pm**

**Sign Up Quickly!**

**THEME:** Puppets Performing. At the end of the summer we'll put on a puppet show. You don't want to miss this summer fun.

During the summer we'll have two field trips a week. One is generally swimming. The other field trips are usually things that we can get complimentary tickets for or some events that may require a small cost.

Rates: \$350.00 a month

\$100.00 a week

\$8.00 an hour

**Sign up early! 817-285-0885**

**The Clubhouse for Special Needs, Inc.** ♦ 800 Brown Trail, Ste. C ♦ Bedford, Texas 76022 ♦ 817-285-0885

*"... exceedingly, abundantly above all we ask or think."*

*The Clubhouse admits anyone regardless of race, color, and national or ethnic origin. A MHMRTC Contracted Provider*

Volunteers  
Needed  
For the

Summer  
Program

Call me if  
interested.

You can pick  
your days and  
hours.

817-285-0885

Or

Email:  
director@theclubhouse.org

## Photos of the Month

### “Stanley” visits The Clubhouse

A first grader, Chloe, who lives in Chicago, sent us “Stanley.” Stanley is a flat and colorful little person who is part of a first grade school project. He was sent to us and we in turn sent him on to another state. I suppose the project is to see how many states “Stanley” will visit. So, from Texas we sent him on his way to Alabama. What fun we all had while he was here visiting all of us.



Stanley arrives Stanley poses with the group.

Stanley takes a ride on a wheelchair Stanley plays Air-hockey

Stanley raids the frig for a snack

TEXAS to ALABAMA

Continued from page 1

## Giving is very important!

Sometimes “crisis” causes people to give more readily. Why is that?

During Spring Break we had 10 young people, 3 who were in wheelchairs. The words of the day were “excuse me, please.” [In spite of the space issues, we had a great time.]

We’re operating in a space smaller than a modest 3 bedroom home and we’re not talking about a family of four. We’re talking 15-25 people.

### We’re in a crisis!!!

What would happen if  
1000 people  
gave  
\$1000?

I know!!!

Tax-deductible  
501c3 non-profit organization  
MHMRTC contracted provider

## SPONSOR A TEENAGER

Because of the economy, we currently have YOUNG PEOPLE that could use a scholarship.

Would you help?

\$350 / mo. or \$4,200 / yr. or whatever you can give!



[www.theclubhouse.org](http://www.theclubhouse.org)

We are a 501c3 organization.  
Donations are Tax Deductible!

You can mail donations to:  
The Clubhouse for Special Needs, Inc.  
P.O. Box 1196  
Eules, Texas 76039

**SOCIALIZATION, Not VEGETATION!**