

# CLUBHOUSE FOR SPECIAL NEEDS 2026 Summer Program



*The Clubhouse for Special Needs, Inc. ♦ 2701 Harwood Road ♦ Bedford, Texas 76021 ♦ 817-285-0885*

*"...exceedingly, abundantly above all we ask or think."*

# WELCOME TO THE CLUBHOUSE SUMMER PROGRAM

We are excited that YOU are going to join us! We have been thinking and praying about this year. The theme this year is "Summer of Discovery". Summer Program is **May 26<sup>th</sup> - August 11<sup>th</sup>**.

Our weekly pattern will be as follows:

- **Movement Monday** open day for fitness
- **Tuesday** is Event/ Field Trip Day (wear t-shirt please)
- **Wednesday** the Clubhouse will stop by the library
- **Thursday** Swimming Day
- **Fun Friday** is Team building games

**Please turn in this form to CLUBHOUSE before DEADLINE: MAY 16<sup>th</sup> 2026**

\$20.00 Clubhouse T-shirt **BIG FROG T-SHIRTS** 2720 State Highway 121 Ste 300, Euless, TX 76039 \* Phone: (817) 571-3764

We have attached our summer calendar, application form and registration for events sheet. Please update your information for our records to be accurate in the case of an emergency. **Please be aware that field trip dates are subject to change.**

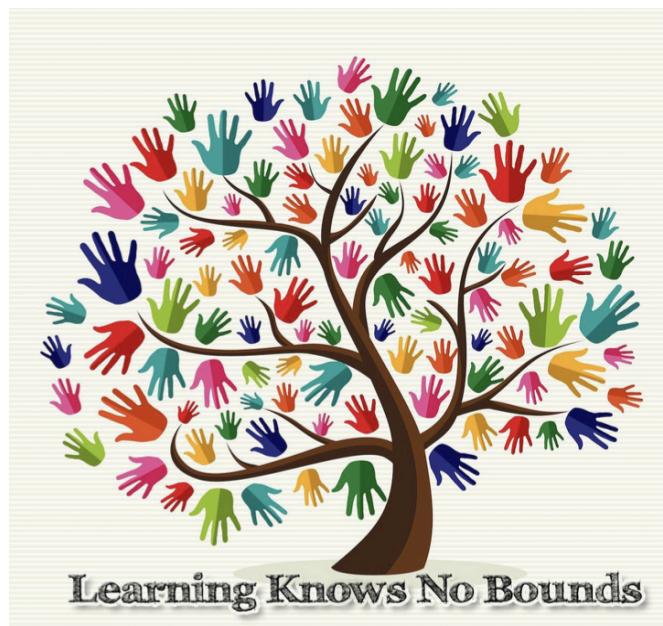
**PLEASE SIGN UP AND PRE-PAY OF THE EVENTS** in addition to monthly tuition. For paid activities, Due by May 20<sup>th</sup> advance payment will guarantee a seat. Waiting until the day before or the day of the event may result in your young person not getting to go. If you pay and miss, **there will be no refund or credit to another event.** as these events are often paid in advance. Some staff are always left at the Clubhouse during events. **Please let us know in advance any dates your clubber will not be in attendance.**

If you are able to volunteer, please fill out our volunteer application. Please see the website.

WE ARE LOOKING FORWARD TO SEEING YOU SOON, LET'S ALL HAVE A GREAT YEAR!!!

Sincerely,

Barbara Freeborn, CEO



*The Clubhouse for Special Needs, Inc.* ♦ 2701 Harwood Road ♦ Bedford, Texas 76021 ♦ 817-285-0885

*"...exceedingly, abundantly above all we ask or think."*

Name: \_\_\_\_\_ SIGN UP SHEET

	MAY		
EVENT	DAY	TOTAL	PAID
<b>MAY 25 - MEMORIAL DAY - CLOSED</b>	Monday, May 25	N/C	
NASH FARM	Wednesday, May 27 - 9:30 AM	\$10.00	
MEALS ON WHEELS	Thursday, May 28 - 9:30 AM	N/C	
	<b>MAY- TOTAL COST- FIELD TRIPS</b>	<b>\$10.00</b>	
	<b>MAY- TOTAL COST - TUITION</b>	<b>\$200.00</b>	
	<b>MAY - TOTAL COST WITH TUITION</b>	<b>\$210.00</b>	
	JUNE		
MOVEMENT MONDAY - 9:30 am	Monday, June 1 <sup>th</sup> , 8 <sup>th</sup> , 15 <sup>th</sup> , 22 <sup>nd</sup> , 29 <sup>th</sup>	\$5.00	
LIBRARY - 9:30 am	Wednesday, 3 <sup>rd</sup> , 10 <sup>th</sup> , 17 <sup>th</sup> , 24 <sup>th</sup>	\$5.00	
SWIMMING & RISE Lake Day-9:30 am	Thursday, June 11 <sup>th</sup> , 18 <sup>th</sup> , 25 <sup>th</sup>	\$5.00	
FRITZ ANIMALCONNECTION	Thursday, June 4 <sup>th</sup> -9:30 am	\$10.00	
JB'S POOL PARTY	Friday, June 5 <sup>th</sup> - 9:30 am	N/C	
PEROT MUSEUM	Tuesday, June 9 <sup>th</sup> -9:30 am	\$15.00	
MOVIE THEATER (TBD)	Tuesday, June 16 <sup>th</sup> -9:30 am	\$15.00	
<b>June 19- JUNETEENTH - CLOSED</b>	Friday, June 19 <sup>th</sup>	N/C	
Frontier of Flight Museum	Tuesday, 30 <sup>th</sup> -9:30 am	\$10.00	
	<b>JUNE - TOTAL COST - FIELD TRIPS</b>	<b>\$65.00</b>	
	<b>JUNE - TOTAL COST TUITION</b>	<b>\$600.00</b>	
	<b>JUNE - TOTAL COST WITH TUITION</b>	<b>\$665.00</b>	
	JULY		
SWIMMING & RISE Lake Day - 9:30 am	Thursday, July 2 <sup>nd</sup> , 9 <sup>th</sup> , 14 <sup>th</sup> , 23 <sup>rd</sup> , 30 <sup>th</sup>	\$5.00	
MOVEMENT MONDAY- 9:30 am	Monday, July 6 <sup>th</sup> , 13 <sup>th</sup> , 20 <sup>th</sup> , 27 <sup>th</sup>	N/C	
LIBRARY - 9:30 am	Wednesday, July 1 <sup>st</sup> , 8 <sup>th</sup> , 15 <sup>th</sup> , 22 <sup>nd</sup> , 29 <sup>th</sup>	N/C	
TIME RIFT ARCADE 11:00am	Friday, July 10 <sup>th</sup> , 17 <sup>th</sup> , 24 <sup>th</sup> , 31 <sup>th</sup>	\$25.00	
BRIANNA'S POOL PARTY	Friday, July 3 <sup>rd</sup> - 9:30 am	N/C	
UTA PLANETARIUM	Tuesday, July 7 <sup>th</sup> - 9:30 am	\$10.00	
MEDIEVAL TIMES	Thursday, July 16 <sup>th</sup> - 9:30 am	\$45.00	
CHILDREN'S AQUARIUM	Tuesday, July 21 <sup>st</sup> - 9:30 am	\$10.00	
CAR & TOY MUSEUM	Tuesday, July 28 <sup>th</sup> - 9:30 am	\$5.00	
	<b>JULY - TOTAL COST - FIELD TRIPS</b>	<b>\$100.00</b>	
	<b>JULY - TOTAL COST TUITION</b>	<b>\$600.00</b>	
	<b>JULY - TOTAL COST WITH TUITION</b>	<b>\$700.00</b>	
	AUGUST		
LIBRARY - 9:30 am	Wednesday, 5 <sup>th</sup> , 12 <sup>th</sup> , 19 <sup>th</sup> , 26 <sup>th</sup>	\$5.00	
END OF SUMMER PARTY	Friday, August 7 <sup>th</sup> - 6:00pm	N/C	
ALLY CATS - PIZZA & BOWLING	Tuesday, August 11 <sup>th</sup> - 9:30 am	\$25	
	<b>AUGUST - TOTAL COST - FIELD TRIPS</b>	<b>\$30.00</b>	
	<b>AUGUST - TOTAL COST TUITION</b>	<b>\$350.00</b>	
	<b>AUGUST - TOTAL COST WITH TUITION</b>	<b>\$380.00</b>	
	<b>TOTAL COST FOR ENTIRE SUMMER FIELD TRIPS</b>	<b>\$205.00</b>	
	<b>TOTAL COST FOR ENTIRE SUMMER TUITION AND FIELD TRIPS</b>	<b>\$1,955.00</b>	

# MAY 2026

Sunday	Monday	Tuesday	Wednesday	Thursday	Friday	Saturday
					1	2
3	4	5	6	7	8	9
10	11	12	13	14	15	16
17	18	19	20	21	22	23
24	25 MEMORIAL DAY CLOSED	26 FIRST DAY OF SUMMER	27 Nash Farm @9:30	28 Meals on Wheels @9:30	29	30

- Total Field trips for the month \$10 (Dates are subject to change)

\$10.00 Nash Farm  
\$FREE Meals on Wheels

9:30 am Wednesday, MAY 27<sup>th</sup>, Bring Sack Lunch

# JUNE 2026

Sunday	Monday	Tuesday	Wednesday	Thursday	Friday	Saturday
	1 Movement Mon (Sparger Park) @9:30 <b>BRING SACK LUNCH</b>	2	3 Euess Library@9:30	4 Fritz Animal Connection @9:30 <b>SACK LUNCH OR LUNCH \$\$</b>	5 JB's Pool Party! @9:30am Lunch Provided!	6
7	8 Movement Mon (Bob Eden) @9:30 <b>BRING SACK LUNCH</b>	9 Perot Museum @9:30am <b>BRING SACK LUNCH</b>	10 Library at CH @9:30	11 Swim Group A @9:30	12	13
14	15 Movement Mon (Park @9:30) <b>BRING SACK LUNCH</b>	16 Movies TBD	17 North Richland Hill Library @9:30	18 Swim Group B @9:30	19 <b>CLOSED Juneteenth</b>	20
21	22 Movement Mon (Park @9:30) <b>BRING SACK LUNCH</b>	23	24 Meals on Wheels @9:30	25 Swim Group C @9:30	26	27
28	29 Movement Mon (Park @9:30) <b>BRING SACK LUNCH</b>	30 Frontier of Flight Museum @9:30am <b>BRING SACK LUNCH</b>				

- Total Field trips **for the month \$ 60.00** (Dates are subject to change)
- Movement Mondays & LAKE DAY: PLEASE **PLEASE BRING SACK LUNCH**
- Fritz Animal Connection: **PLEASE BRING SACK LUNCH OR LUNCH \$\$**
- Swim days: Swim Thursdays: **Please wear** swim clothes under regular clothes when they arrive
- **Bring** spray sunscreen, dry underwear, and a towel.

\$5.00 Swimming & Lake Day R.I.S.E  
 \$0.00 Library &  
 \$5.00 Movement Monday Class  
 \$15.00 Perot Museum  
 \$10.00 Fritz Animal Connection  
 \$15.00 Movie (TBD)  
 \$10.00 Frontier of Flight Museum

9:30 am Thurs Weekly, JUNE 5<sup>th</sup>, 11<sup>th</sup>, 18<sup>th</sup>, 25<sup>th</sup>  
 9:30 am Wed Weekly 3<sup>rd</sup>, 10<sup>th</sup>, 17<sup>th</sup>, 24<sup>th</sup>  
 9:30 am Mon Weekly 1<sup>st</sup>, 8<sup>th</sup>, 15<sup>th</sup>, 22<sup>nd</sup>, 29<sup>th</sup>  
 9:00 am Tue JUNE 9<sup>th</sup>  
 9:30 am Thurs JUNE 4<sup>th</sup>  
 9:30 am Tues JUNE 16<sup>th</sup>  
 9:30 am Tues JUNE 30<sup>th</sup>

The Clubhouse for Special Needs, Inc. ♦ 2701 Harwood Road ♦ Bedford, Texas 76021 ♦ 817-285-0885

“...exceedingly, abundantly above all we ask or think.”

# JULY 2026

Sunday	Monday	Tuesday	Wednesday	Thursday	Friday	Saturday
			1 Euess Library@9:30	2 Swim Group D @ 9:30	3 Brianna's Pool Party Lunch Provided!	4
5	6 Movement Mon @9:30	7 UTA Planetarium @9:30	8 Library at CH @9:30	9 Swim Group A @ 9:30	10 Time Rift Arcade @12:00pm	11
12	13 Movement Mon @9:30	14 Swim Group B @ 9:30	15 North Richland Hill Library @9:30	16 Medieval Times @9:30	17 Time Rift Arcade @12:00pm	18
19	20 Movement Mon @9:30	21 Children's Aquarium @9:30am <b>BRING SACK LUNCH</b>	22 Meals on Wheels @9:30	23 Swim Group C @ 9:30	24 Time Rift Arcade @12:00pm	25
26	27 Movement Mon @9:30	28 Car & Toy Museum @9:30	29 Library at CH @9:30	30 Swim Group D @ 9:30	31 Time Rift Arcade @12:00pm	

- Total Field trips **for the month \$ 100** (Dates are subject to change)
- **Swim days: Swim Thursdays:** Please wear swim clothes under regular clothes when they arrive
- Bring spray sunscreen, dry underwear, and a towel.

\$5.00 **Swimming & Lake Day R.I.S.E**

\$25.00 **Time Rift Arcade**

\$0.00 **Library &**

\$0.00 **Movement Monday Class**

\$10.00 **UTA Planetarium**

\$45.00 **Medieval Times**

\$10.00 **Childrens Aquarium**

\$5.00 **Car & Toy Museum**

\$FREE **Meals on Wheels**

9:30 am Thurs Weekly 2<sup>nd</sup>, 9<sup>th</sup>, 14<sup>th</sup>, 23<sup>rd</sup>, 30<sup>th</sup>

12:00 pm Friday Weekly 10<sup>th</sup>, 17<sup>th</sup>, 24<sup>th</sup>, 31<sup>th</sup>

9:30 am Wed Weekly 1<sup>st</sup>, 8<sup>th</sup>, 15<sup>th</sup>, 22<sup>nd</sup>, 29<sup>th</sup>

9:30 am Mon Weekly 6<sup>th</sup>, 13<sup>th</sup>, 20<sup>th</sup>, 27<sup>th</sup> **PLEASE BRING SACK LUNCH**

9:30 am Tue 7<sup>th</sup> **PLEASE BRING SACK LUNCH**

9:30 am Tue 16<sup>th</sup>

9:30 am Tue 21<sup>st</sup> **PLEASE BRING SACK LUNCH**

9:30 am Tue 28<sup>th</sup>

Monthly

# AUGUST 2026

Sunday	Monday	Tuesday	Wednesday	Thursday	Friday	Saturday
						1
2	3 *Pajama Day	4 *Decade Day	5 *Western Day EuessLibrary @9:30	6 *Superhero/Disney Day	7 *Jersey Sports Day END OF SUMMER PARTY! @ 6:00pm	8
* D R E S S U P S P I R I T W E E K ! *						
9	10 Movement Mon @9:30	11 LAST DAY OF SUMMER Alley Cats-Bowling & Pizza @9:30	12 Library at CH @9:30	13	14	15
16	17 Meals on Wheels @9:30	18	19 North Richland Hill Library @9:30	20	21	22
23	24	25	26	27	28	29

- Total Field trips **for the month \$30.00**

**(Dates are subject to change)**

\$5.00 Library

\$FREE Movement Monday Class

\$25.00 Alley Cats-Bowling & Pizza

\$FREE Meals on Wheel

9:30 am Wed Weekly 12<sup>th</sup>, 19<sup>th</sup>

9:30 am Mon Weekly 3<sup>rd</sup>, 10<sup>th</sup>, 17<sup>th</sup>

9:30 am Tue 11<sup>th</sup>

Monthly

## LOCATION INFO

### **Movement Monday - nature walks, parks, fitness activities**

**Linear Trails** behind Clubhouse 2701 Harwood Rd, Bldg. B Bedford, TX 76021 [\(817\) 285-0885](tel:8172850885)

**Bedford Boys Ranch Lake** 2312 Lakeview Dr, Bedford, Tx 76021 [\(817\) 952-2300](tel:8179522300)

**Sparger Park** 4301 Bedford Rd, Colleyville, Tx 76034 [\(817\) 503-1000](tel:8175031000)

**Bob Eden** 901 W Mid Cities Blvd, Euless, TX 76039 [\(817\) 685-1650](tel:8176851650)

### **Library**

**Bedford Library** 2424 Forest Ridge Dr, Bedford, TX 76021 [\(817\) 952-2350](tel:8179522350)

**Colleyville Library** 100 Main St, Colleyville, TX 76034 [\(817\) 503-1150](tel:8175031150)

**Euless Library** 201 N Ector Dr, Euless, TX 76039 [\(817\) 685-1480](tel:8176851480)

**Hurst Library** 901 Precinct Line Rd, TX 76053 [\(817\) 788-7300](tel:8177887300)

**Grapevine Public Library** 1201 Municipal Way Grapevine, Tx 76051 [\(817\)410-3400](tel:8174103400)

**North Richland Hills Library** 9015 Grand Ave, North Richland Hills, TX 76180 [\(817\) 427-6800](tel:8174276800)

**LAKE DAY- Rise Adaptive Sports** Park Rd 4, Grapevine, TX [\(972\) 292-8650](tel:9722928650)

**Ally Cats - PIZZA & BOWLING** 609 NE Loop 820, Hurst, TX 76053 [\(817\) 589-0523](tel:8175890523)

**Frontier of Flight Museum** 6911 Lemmon Ave, Dallas, TX 75209 [\(214\) 350-3600](tel:2143503600)

**Bob Jones Nature Center** 355 E Bob Jones Rd, Southlake, TX 76092-9273 [\(817\) 748-8019](tel:8177488019)

**Fritz Animal Connection** 312 East Vilbig Street Irving Tx, 75060 [\(817\) 300-8004](tel:8173008004)

**Medieval Times** 2021 N Stemmons Fwy, Dallas, TX 75207 [\(888\) 935-6878](tel:8889356878)

**DFW Car & Toy Museum** 2550 McMillan Pkwy, Fort Worth, TX 76137 [\(817\) 834-3625](tel:8178343625)

**Children's Aquarium Dallas** 1462 1st Ave, Dallas, TX 75210 [\(469\) 228-8817](tel:4692288817)

**Perot Museum of Nature and Science** 2201 N. Field Street, Dallas, TX 75201 [\(214\) 428-5555](tel:2144285555)

**UTA Planetarium** Chemistry and Physics Building, 700 Planetarium Pl, Arlington, TX 76019 [\(817\) 272-1183](tel:8172721183)

**Meals On Wheels** local deliveries [\(817\) 285-0885](tel:8172850885)

Swim Days: Hopkins, Pluhowski, and Thomas Residence